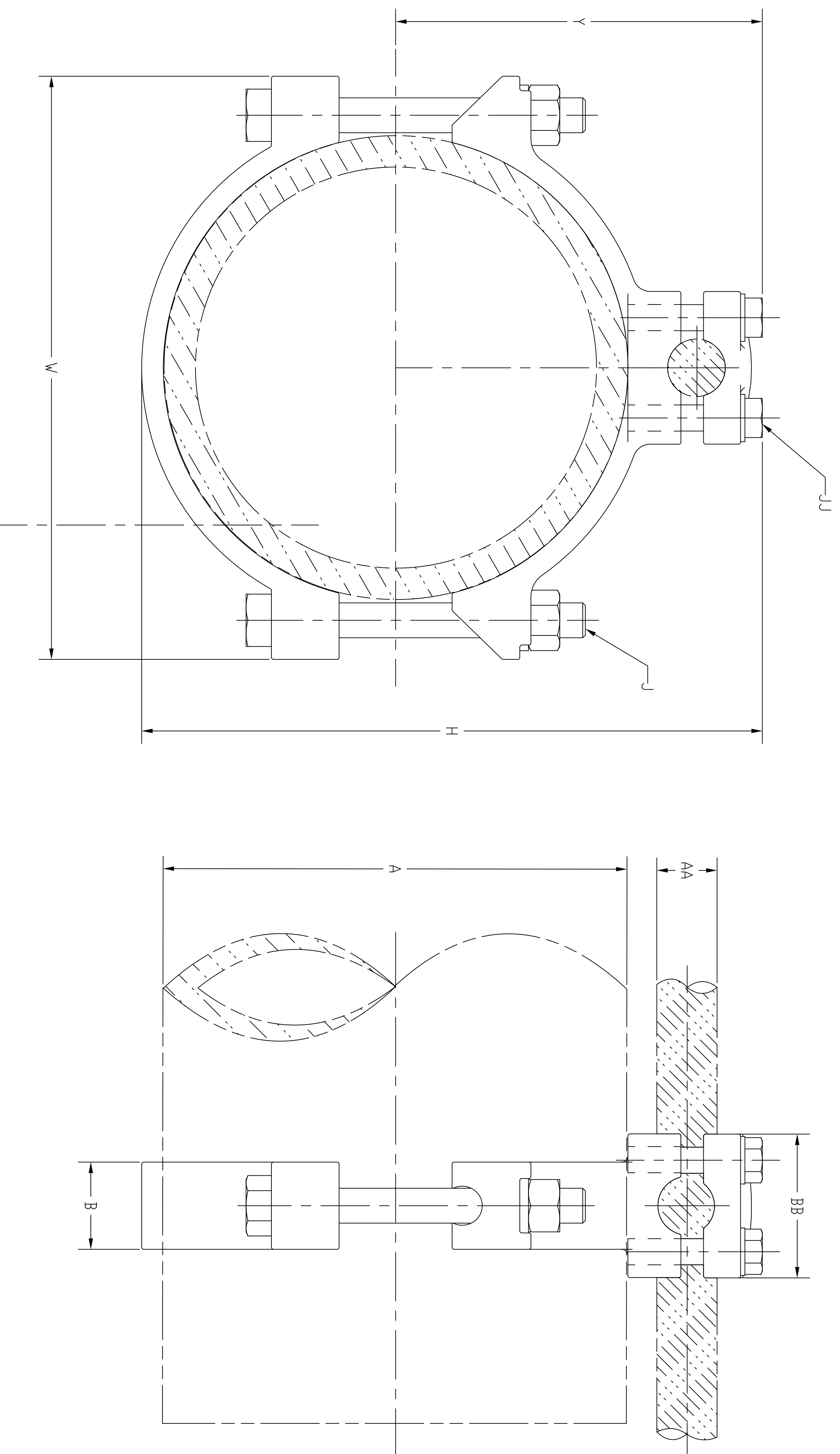


CATALOG NUMBER	I.P.S. PIPE ACCOMMODATED		COPPER CONDUCTOR ACCOMMODATED				METRIC WIRE SIZE				B	BB	H	J	JU	W	Y	TORQUE									
	NOMINAL DIAMETER (in)	ACTUAL DIAMETER (in)	MIN SIZE	MAX SIZE	MIN DIA	MAX DIA	MIN SIZE	MAX SIZE	MIN DIA	MAX DIA								Lb in	Nm								
HGBGAR8629	6	6.625	[162]	2/0 sol	0.365	250 Kcmil	0.575	70mm ² str	[10.9]	[120mm ² str	[14.4]	1.25	[32]	1.81	[46]	8.81	[224]	1/2	[13]	3/8	[10]	8.38	[213]	5.16	[131]	480	54.1



- NOTES:
- 1 MATERIAL: CAST COPPER ALLOY.
 - 2 FINISH: BRIGHT DIPPED.
 - 3 SPECIFICATIONS SUBJECT TO CHANGE WITHOUT NOTICE.

REV.	EON	DATE	DESCRIPTION	CHG BY	APPD BY
1	18024	12/10/12	INITIAL RELEASE	MMA	

Created on AUTOCAD		DIMENSIONING AND TOLERANCE PER ANSI Y14.5M-1982 UNLESS OTHERWISE SPECIFIED, DIMENSIONS ARE IN INCHES (MM). TOLERANCES X = ±.03 (B) XX = ±.02 (A) XXX = ±.01 (S) ANGLE TO .1°		PROJECT REFERENCE: 2011-041		<p>Hubbell Hubbell Incorporated (Delaware) 14 Lord's Hill Road, Stonington, Connecticut 06378</p>
IN ACCEPTING OUR DRAWINGS, BLUEPRINTS, OR SUPPORTING DOCUMENTATION FOR QUOTATION OR OTHER PURPOSES, YOU AGREE NOT TO DISCLOSE TO OTHERS THE INFORMATION CONTAINED IN THESE DESIGNS SHOWN HEREIN, AND THAT YOU WILL MAKE NO USE OF SAME WITHOUT PERMISSION		DRAWN BY: M. ABBY 12/05/12		TITLE: PIPE CLAMP		
MATERIAL: SEE NOTES		CHECKED BY:		SIZE DRAWING NO. D HWS14201C		
APPROVED BY:		APPROVED BY:		SCALE: N/A		
				SHEET 1 OF 1		
				REV. 1		